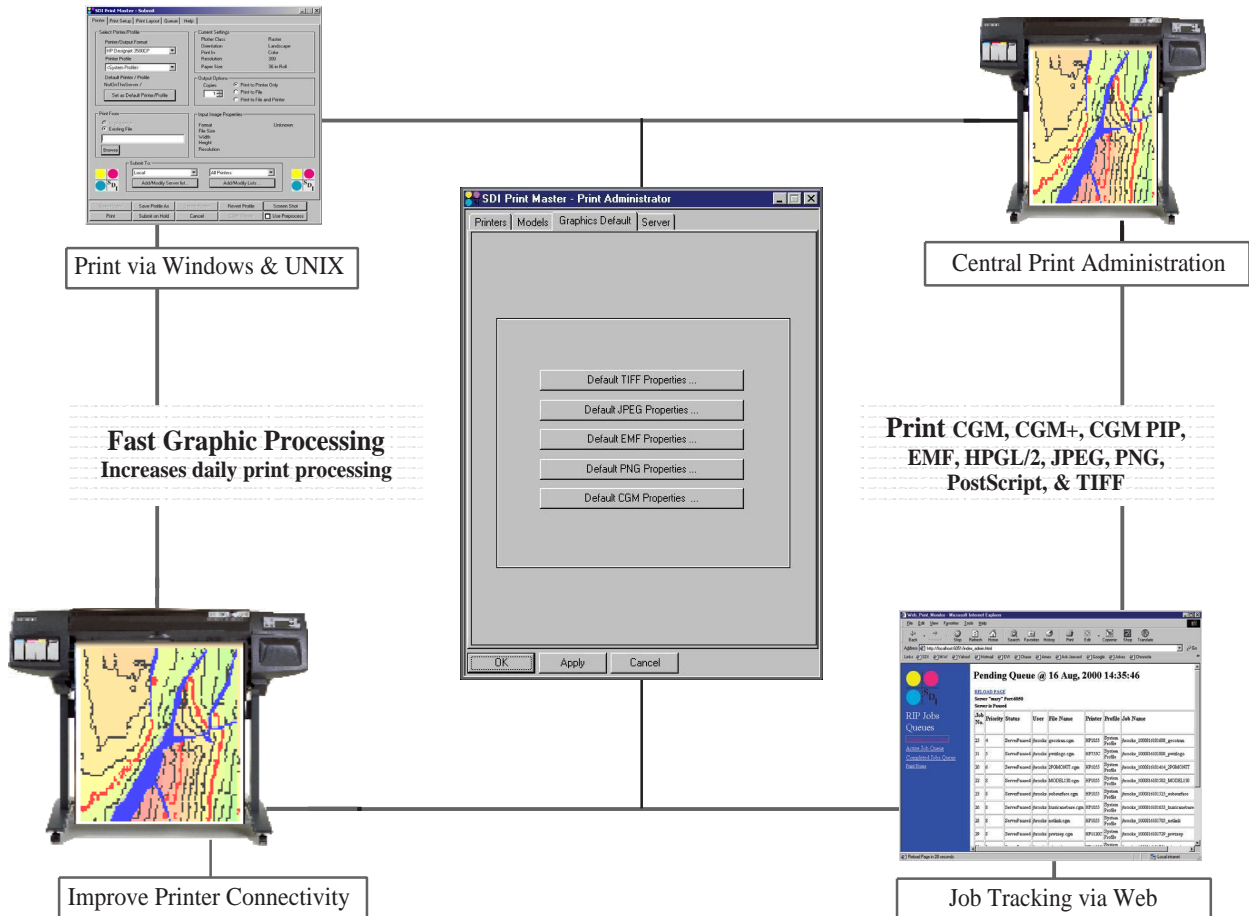




# SDI Print Master

**SDI's graphic printing software for Windows and UNIX environments.**

Geo Work Groups struggle daily with slow printing times, print integration of Windows and UNIX applications, and printer connectivity issues.



Print Master solves "slow printing" problems with the industry's fastest graphics processing server for CGM, PDF, PostScript, EMF, HPGL/2, JPEG, PNG and TIFF files.

Windows and UNIX print integration is made possible by SDI's implementation of TCP/IP socket technology. Now, Windows workstations can print submit to UNIX print servers and UNIX workstations can print submit to Windows print servers.

Printer connectivity is improved because Print Master supports Windows Print Manager and UNIX LP/LPR. Enhanced printer connectivity also means Print Master can drive many popular wide-format and small-format printers such as HP, Epson, Lexmark, iSys, Canon and Xerox.

Print Master provides a flexible printing architecture that provides Geo Work Groups with a common production oriented printing system.

**Contact SDI for an evaluation**



SalesUS@sdicgm.com  
1 713-266-5667



SalesUK@sdicgm.com  
+011 44-1732-369988

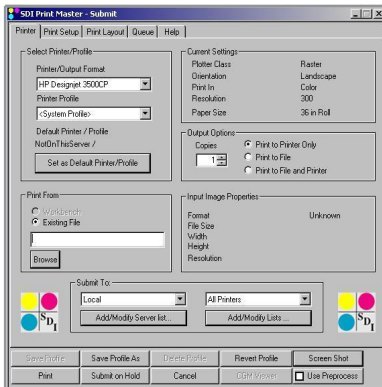


sdbj@sina.com  
+011 86 10-8200-5004



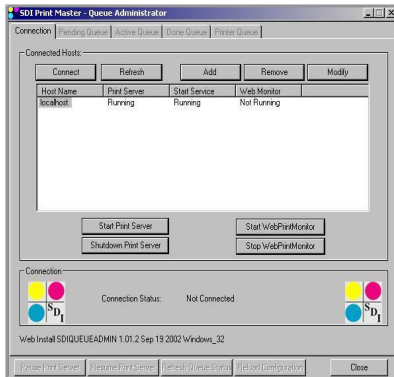
## Print Master Interfaces

### SDI Submit



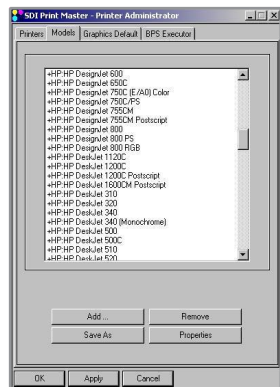
- Print Interface for Windows and UNIX.
- Select file, printer, output, scale, copies, and orientation.
- Control dither, gamma, color, mono, and grayscale.
- CGM Viewer.
- Job tracking and print control for end users.

### Queue Administrator



- Manage local and remote Print Master servers.
- Multi-queue control: Pending, Active, Done, Printer.
- Print job control: prioritize, suspend, and remove.
- View print job log files.
- Setup and monitor job tracking with Apache web server.
- SDI Update Service for easy upgrading.

### Printer Administrator



- Processing: CGM, CGM+, CGM\*PIP, EMF, HPGL/2, PDF, PostScript, JPEG, PNG & TIFF.
- Easily add, configure, and remove print devices.
- Connect printers with Windows Print Manager and UNIX LP/LPR.
- Printer Models: Atlantek, Calcomp, Encad, Epson, HP, Lexmark, OYO, Schlumberger, Tektronix, iSys, Neuralog, Canon & Xerox.

## Platforms & Applications

**Windows:** 2000/XP/Vista

**UNIX:** AIX , HP UX , IRIX , Solaris

**LINUX:** Red Hat. Susse, Fedora, CentOS

**Applications:** Schlumberger, Landmark, Paradigm, Hampson-Russell, Jason, SMT, ESRI